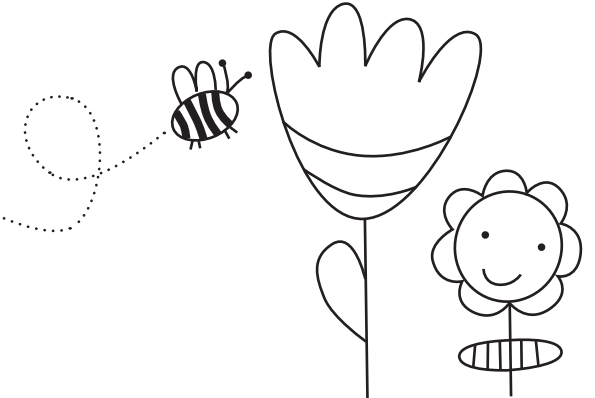


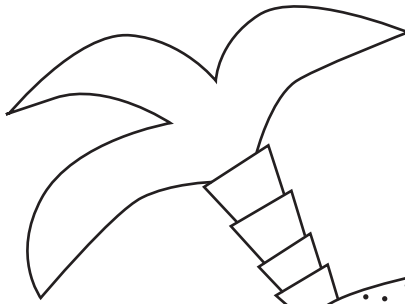
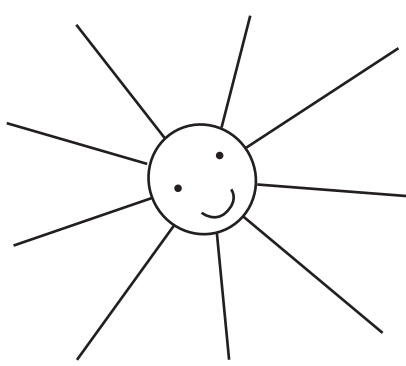
# GUTE-LAUNE-FRÜHLING-LISTE

Handwriting practice lines consisting of 12 horizontal dotted lines.

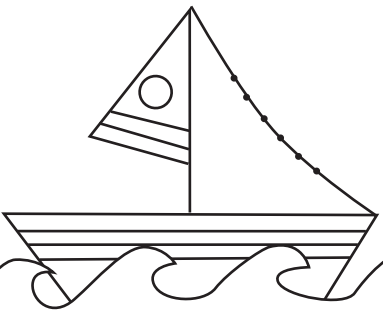
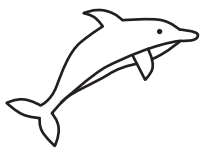
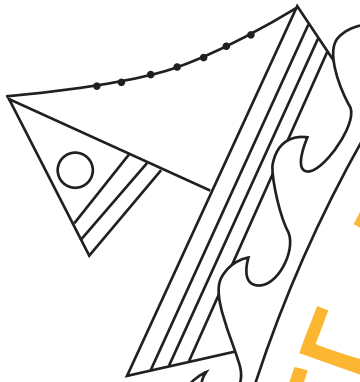


GUTE-LAUNE-SOMMER-LISTE

Handwriting practice lines consisting of a solid top line, a dashed middle line, and a solid bottom line, repeated vertically down the page.

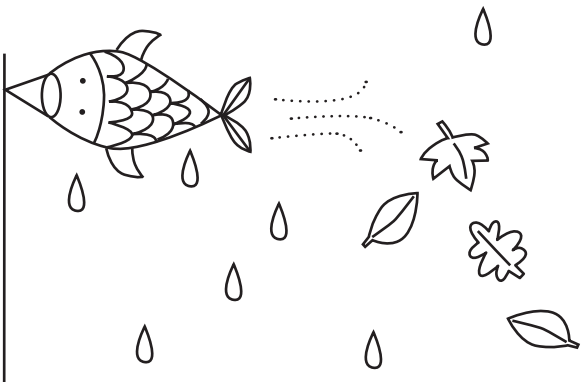


GUTE-LAUNE-SOMMER-LISTE



# GUTE-LAUNE-HERBST-LISTE

Handwriting practice area consisting of ten horizontal dotted lines for tracing on a white background.



# GUTE-LAUNE-HERBST-LISTE

GUTE-LAUNE-WINTER-LISTE

Handwriting practice area consisting of ten horizontal dotted lines for writing.

